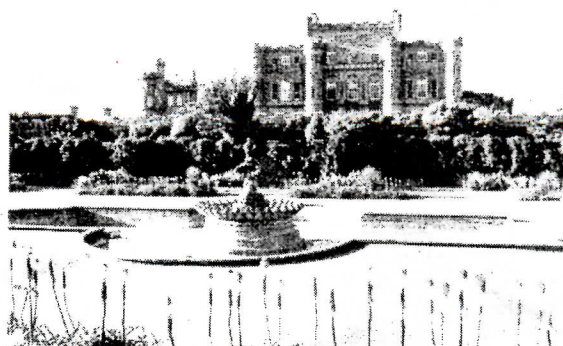
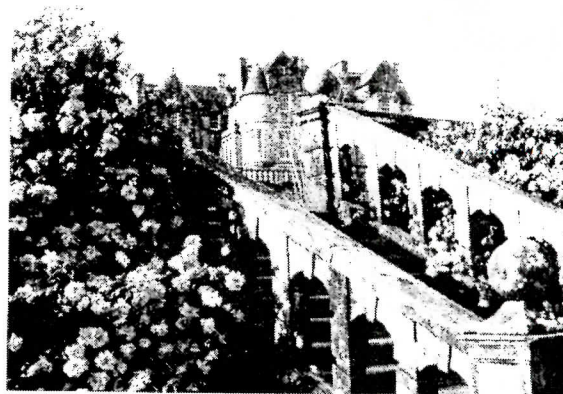
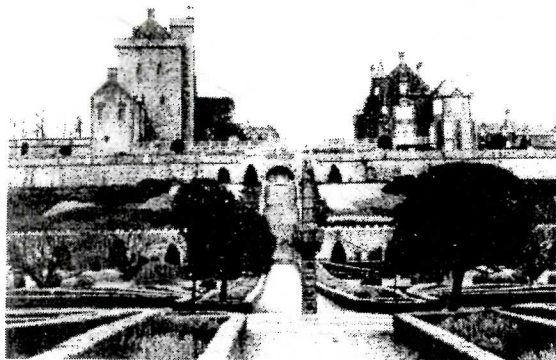
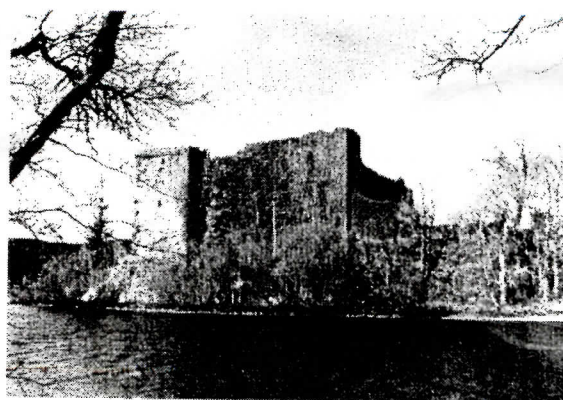
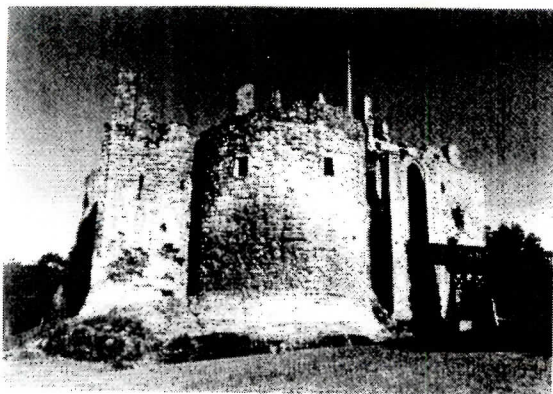


April 2003 \$3.00

Let's Dance

THE MAGAZINE OF INTERNATIONAL FOLK DANCING

CASTLES OF SCOTLAND



Editor: Nadine Mitchell, ggmnadine@cs.com
Council Clips: Nadine Mitchell, ggmnadine@cs.com
Publications: Joel Bruxvoort, joel@folkdance.com
Address Change & Membership:
Sidney Messer, tspolaris1@aol.com
Calendar: (*Temporary*) Nadine Mitchell,
ggmnadine@cs.com
Website: www.folkdance.com

MARCH CONTRIBUTORS

Greg Mitchell	Sandy Helperin
Nadine Mitchell	Naomi Lidicker
Barbara Malakoff	Margaret Nacorda-Kinney
Joel Bruxvoort	Barbara Bruxvoort
Marshall Cates	

FEDERATION OFFICERS, NORTH

PRESIDENT, Greg Mitchell
VICE PRESIDENT, Vacant
TREASURER, Page Masson
REC. SECRETARY, Laila Messer
MEMBERSHIP, Sidney Messer
PUBLIC RELATIONS, Mike Norris
HISTORIAN, Mel Mann
PUBLICATIONS, Joel Bruxvoort
EDITOR, Nadine Mitchell

FEDERATION OFFICERS, SOUTH

PRESIDENT, Sylvia Stachura
VICE PRESIDENT, Karen Wilson-Bell
REC. CORRESP. SECRETARY, Lynn Bingle
TREASURER, Gordon Wall
MEMBERSHIP, Rick Bingle
HISTORIAN, Julith Neff

Website:

<http://us.geocities.com/FDFedSouthInc/>

**ARTICLES & INFORMATION
FOR LET'S DANCE SUBMISSION
DEADLINE:**

Deadline for each issue is the 5th of
2 months previous (i.e., the May/June
2003 deadline is the 5th of March,
2003). Send to Nadine Mitchell, 1941
Danvers Way, Sacramento, CA. 95832



TABLE OF CONTENTS

	<u>PAGE</u>
President's Message.....	3
Calendar of Events.....	4, 5, 6 & 7
Dance Descriptions	
Naz Can.....	8 & 9
Duz Halay.....	10 & 11
Cherry Blossom Festival.....	12 & 13
Blossom Festival.....	14
Statewide 2003 - A Village Faire.....	15, 16 & 17
Council Clips.....	18
Stockton Folk Dance Camp Application.....	19

**Requirements for submitting ads, flyers, &
printed information to Editor:**

Information submitted should be received by the
Editor 2 months prior to the issue concerned, no later
than the 5th of the month. Electronic submission
should be in Microsoft Word. This material must be
on white paper, camera-ready with one-inch margins
all around the page. This includes flyers, which
should contain location and address information and
directions, as well as the name and telephone number
of the contact person. All material mailed that does
not require retyping must be accurate and mistake-
free as it will have to be scanned and therefore can-
not be edited. Any material submitted in other
forms, i.e., typewritten, handwritten, etc. must be
discussed with the Editor prior to submission. Any-
thing not sent in the proper format or discussed pre-
vious to mailing will be returned.

ON OUR COVER:

CASTLES OF SCOTLAND

Special thanks to Eleanor and Clyde Moore
(www.photosbyeleanor.com) for the loan of their
Scotland pictures. All photos © Eleanor & Clyde
Moore (2003).

SUBSCRIPTION RATE:

\$17.50 per year (magazine only)
\$22.50 per year (Associate Member)

APPLICATIONS TO:

Sidney Messer
P. O. Box 561
Sausalito, CA. 94966

PRESIDENT'S MESSAGE

Happy Easter! I hope that everyone enjoyed the Camellia Festival in Sacramento last month. The Sacramento Council did a fantastic job again. My thanks to President Vick Vickland and his committees for doing such fine work.

This month is the annual Federation Blossom Festival in San Francisco, to be held on April 27 and co-chaired by Joel Bruxvoort and Craig Blackstone. Knowing them, I'm sure there's going to be a great concert during the afternoon festival, as well as a danceable program. Please plan to attend the Assembly Meeting before the Festival, where, for those of you who are not aware, is when we accept nominations for the people who will fill the offices of President, Vice President, Secretary and Treasurer. I wish them luck in their new positions. Next month we all go down to Pasadena where they will be installed and assume their duties.

My two years as President have been fulfilling to me. I was unaware when I took over this job that I had so many helpers who are more than willing to assist me with decisions. I'm sorry to say that I have not been able to attend some of the regional festivals that were held during my term of office. I'm sure there are more great people that I would have liked to have met. For example, I was introduced to the Peninsula Council President, Al Lisin, who I had not met before this year and I've just become acquainted with Floyd Davis and Barbara Summers, who are heading up the Statewide 2004 Committee. I would have liked to have attended Max and June Horn's Farm for their holiday folk dance celebrations. Due to other obligations this was not possible. I cherish all the folk dancers who have always worked so diligently throughout the years.

Again, in this message, as I have in others, I would like to stress that if anyone has any problems or complaints to please contact me and I will see what I can do to help. Be aware that I expect you to attend the next Assembly Meeting to participate in the Federation's activities.

Hope to see you on the dance floor!

Greg Mitchell

April CALENDAR OF EVENTS

Send future upcoming events information to Nadine Mitchell,
1941 Danvers Way, Sacramento, California 95832-1226, (916) 665-1558,
e-mail: [ggmnadine@cs.com](mailto:ggm nadine@cs.com)

Deadline for May/June 2003 issue is March 5, 2003

Note: Information must be received by the above date or it will not be published.

Plan ahead! Save these dates for upcoming Federation and other events.

- April 6, 2003** **Cherry Blossom Festival.** Veterans Building, Sonoma, CA.
- April 27, 2003** ***Blossom Festival.** City College of San Francisco, North Gym, 2nd Floor
Dance Studio. Assembly Meeting preceding Festival, 11:30 AM - 12:30 PM.
- May 23-26 2003** ***Statewide Memorial Day Weekend.** "A Village Faire." Pasadena, CA.
(See article in this issue).
- June 8, 2003** **Rose Festival.** Veterans Building, Santa Rosa, CA.
- July 3 - 14, 2003** **FOLKLORE & HERITAGE TOUR IN SLOVAKIA.** Dance classes,
Výcholna and Detva Folk Festivals, meetings with village folklore groups, concert
by famous Železiar Ensemble; museums & historical sites. Transport from Brati-
slava or Vienna Airports, air-conditioned bus, full board, 3-star hotels.
Slovak Director: Palo Pitoňák, 3art@3art.sk; www.3art.sk/folktrip.htm.
USA Coordinator/Contact: Vonnice Brown, 1717 Applewood Road, Baton
Rouge, LA 70808; vrbfolk@prodigy.net; Tel./FAX: (225) 766-8750.
FOLKLORE & HERITAGE TOUR IN SLOVAKIA & POLAND. Informa-
tion is basically the same as above event except the folk festivals will be at dif-
ferent sites. This is the first time that a seminar and tour has been organized
to Poland so this should be an attraction of interest. Final details on this event
are still being worked on and will soon be available on the website.
- August 17, 2003** **Little Festival of the Redwoods.** Guerneville, CA.
- September 7, 2003** ***Fiesta de Sonoma.** Veterans Building, Sonoma.

*FEDERATION EVENTS

COUNCIL CLUB PARTIES

Redwood Council

- Napa Valley Folk Dancers Party.** Grandview Mobilehome Park Clubhouse,
4130 Byway East, Napa, 94558. Classes every Tuesday, 10:30 AM-12:00
Noon. Advanced: Thursdays, 10:30 AM-12:00 Noon. Beginners: Friday,
10:30 AM-12:30 PM. Women's Group. Party: Every 4th Saturday, 10:30 AM
to 12:30 PM.
- Every Wednesday** **Novato Folk Dancers.** Lynwood School, 1320 Lynwood Drive, Novato, CA.
94947. Time: 8:00-10:00 PM. Contact 415-892-9405.

Redwood Council (Continued)

Every Wednesday **Santa Rosa Folk Dancers.** 1:45-3:45 PM, Willowside Hall, 5299 Hall Rd., Santa Rosa, CA. Contact Frank and Elsa, 707-546-8877. **Party: April 16.**

San Francisco Council **Changs International Folk Dancers, Inc.** Meets the first four Fridays of each month at the Social Hall, 7th Avenue Presbyterian Church, 1329 7th Avenue, San Francisco. Contact Sidney Messer, 415-332-1020.

2003 **First Two Fridays** of each month. Teaching: 8:00-9:30 PM. Teacher: Craig Blackstone. General Dancing: 9:30-10:30 PM.

2003 **Third Friday** of each month. Party Night: 8:00-11:00 PM. Refreshments and General Dancing.

Fourth Friday of each month. General Dancing: 8:00-11:00 PM.

Mandala Folk Dance Center. Meets every Thursday at St. Paul's Church Hall, 43rd & Judah, San Francisco, 7:30-8:15 PM. Request dancing, 8:15-9:00 PM. Intermediate teaching from 9:00 - 9:45 PM. Request dancing from 9:45-11:00 PM. First and last Thursdays are always Party Nights. Contact Edith or Paul at 415-648-8489.

Peninsula Council

April 5, 2003 **Palomanians Party.** First Methodist Church, Broadway at Brewster, Redwood City. Contact Al Lisin, 408-252-8106.

April 26, 2003 **Docey Doe Folk Dancers.** Community United Church, San Carlos. Contact Bruce Wyckoff, 415-368-7834.

April 26, 2003 **Menlo Park Folk Dancers.** Menlo Park Recreation Center, 700 Alma at Mielke, Menlo Park. Contact Marcel Vinokur, 415-327-0759.

Sacramento Council

Selective Saturdays 2003 **Balliamo!** Sierra Two Community Center, 24th St. and 4th Ave. Contact Doris Beckert, 916-482-8674.

Selective Saturdays 2003 **El Dorado Scandinavian Dancers.** 3100 Ponderosa Road, Shingle Springs, CA. 2:30 PM - 4:30 PM. Workshop: 7:00 PM - 11:00 PM. Party (live music). Contact Marida Martin at 530-672-2926.

First Saturdays 2003 **Reno Folk Dancers.** Studio 214, 214 California Avenue, Reno, Nevada. Contact Penney Ohnstad at 775-358-6762.

April 5, 2003 **Kolo Koalition.** Balkan Party: 8:00 PM - ? YLI Hall, 27th & N Streets. Contact Laura Leonelli at 916-739-6014.

Sacramento Council (Continued)

- April 12, 2003** **Pairs & Spares Folk Dance Club.** Babcock School, 2400 Cormorant Way, 8:00 PM - 11:00 PM. Contact: Chuck Paulsen, 916-428-6992.
- April 19, 2003** **BBKM.** YLI, 27th & N Streets. Meets 3rd Saturday of the month, 8:00 PM -? Contact Barbara Bevan, 916-923-1555.
- April 26, 2003** **First & Last Dancers Party.** Valley Oaks Grange , 5th & D Streets, Galt. 8:00 PM to Midnight. Theme: "**Spring Flowers.**" *White Elephant Sale.* Contact Eda Scheuffele at 916-682-2638.
- Third Saturdays 2003** **Sacramento Cape Breton Step Dancers.** St. Francis School Lunchroom, 2500 K St. Classes first Sunday of the month & third Saturday. Contact Bob Schuldheisz, 209-745-9063.
- 2003** **Royal Scottish Country Dance Society.** YLI Hall, 27th & N Sts. Contact Cherilyn Larsen, 916-429-9170.
- 2003** **Nevada County Folk Dancers.** Methodist Church, 433 Broad St., Nevada City, CA. Selected Fridays. Call for dates. Contact David Unterman, 530-272-2149.

Berkeley Folk Dancers All classes are held at Hillside Montessori School, 1581 Leroy Ave., Berkeley, CA 7:45-9:45 PM. Contact Naomi Lidicker, 510-524-2871.

April 19 **Berkeley Folk Dancers.** Open Teaching Night. 7:45 PM - 10:30 PM. Contact El Malmstrom, 510-525-3030.

Club Weekly Class Schedules

Mondays	2 nd year	Claire & Al George, 510-841-1205
Tuesdays	Beginners	Lone Coleman & Mark Anderson
Wednesdays	4 th year	Louise & Bill Lidicker, 510-528-9168
Thursdays	3 rd year	Henry Koopmann; Yaqi Zhang. 510-525-1865
Saturday	Requests	7:45-10:30 PM Contact Ed Malmstrom, 510-525-3030

Fresno Folk Dance Council

Where to Dance in Fresno

- Tuesdays** **Fresno Danish Dancers.** Clovis Senior Center. 6:30-9:00 PM. Contact Wilma Anderson, 559-292-3176.
- Central Valley-CAFY.** Lafayette Center. Preston Street, West of Blackstone. Contact Fran Ajoian, 559-255-4508.
- Wednesdays** **McTeggert Irish Dancers.** Beginners: 5:30-6:30 PM. Intermediate and Advanced: 7:00-8:00 PM. Contact Maureen Hall, 559-271-5200.

Fresno Folk Dance Council


Where to Dance in Fresno

- Tuesdays** **Fresno Danish Dancers.** Clovis Senior Center. 6:30-9:00 PM. Contact Wilma Anderson, 559-292-3176.
- Central Valley-CAFY.** Lafayette Center. Preston Street, West of Blackstone. Contact Fran Ajoian, 559-255-4508.
- Wednesdays** **McTeggett Irish Dancers.** Beginners: 5:30-6:30 PM. Intermediate and Advanced: 7:00-8:00 PM. Contact Maureen Hall, 559-271-5200.
- Saturdays** **Fresno International Folk Dancers.** Pinedale Senior Center; Contact Kent Peterson, 559-226-5010.

Modesto Folk Dancers & Village Dancers of Modesto

- Every Wed. Night** **Modesto Folk Dancers.** Group meets at The Modesto Court Room, 2012 McHenry Blvd., Modesto. Cost: \$3 per person. Contacts: Floyd Davis and Barbara Summers. Phone: 209-847-4439.
- Every Fri. Night** **Village Dancers of Modesto.** Group meets at The Modesto Court Room, 2012 McHenry Blvd., Modesto. Cost: \$3 per person. Contacts: Don and Judy Kropp; Floyd Davis and Barbara Summers. Phone: 209-847-4439.

For information on other Federation activities call 510-558-6862.



Copy Pacific
Where Customer Service is Our #1 Priority!


- Authorized Shipping
- Offset Printing
- High Speed & Color Copies
- Finishing Services
- Desktop Publishing
- Computer Rentals
- Internet Access
- ... and much more!

**PURCHASE \$10 OR MORE AND
RECEIVE 20% OFF WITH THIS AD**

1090 B Street, Hayward, CA 94541
FAX (510) 886-3044 EMAIL copypacific@aol.com
(510) 886-4443

Wes Takara says:

"Welcome to the
Blossom Festival."



Naz Can

(Turkey)

Translation: *Naz* is whims and *Can* is soul. Naz Can is a girl's dance from eastern Turkey and was presented by Ahmet Lüleci at the 2002 Stockton Folk Dance Camp.

Pronunciation: NAHZ djan

Music: Turkish Dances No. 3, Band 14
6/8 meter: Figure I counted in 3, Figures II and III counted in 2.

Formation: Individuals in a semi-circle facing LOD. R arm is extended fwd with R hand on next person's R shldr, back of L hand on own waist and slightly bent.

Styling: The ftwk is very small and smooth (float).

Meas	Pattern
8 meas	<u>INTRODUCTION</u>
	<u>FIGURE I</u>
1	Facing and moving in LOD, step fwd on ball of R ft (ct 1); step fwd on ball of L ft (ct 2); step fwd on full R ft (ct 3).
2	Step fwd on L (ct 1); step fwd on R (ct 2); step fwd on L (ct 3).
3-4	Repeat meas 1-2.
5-8	Repeat meas 1-4 except on last two cts, turn 1/2 L to face RLOD (CCW). While changing arm pos, hands rotate inward.
9-16	Repeat meas 1-8 facing and moving in RLOD, with L hand fwd on neighbor's L shldr. End facing ctr.
	<u>FIGURE II</u>
	Hands free, R is in front of body, rounded from the elbow at shldr, palm facing down. L arm rounded and in back of body, palm facing to R.
1	Step to R on ball of R ft (push hips to R) and starting turn to R (CW) (ct 1); step on L next to R (straighten hips), continuing 1/8 turn (ct 2).
2-8	Repeat meas 1 seven more times, 1/8 turn each meas.
9-16	Repeat meas 1-8 with same ftwk, turning L (CCW) with arms in opp pos.

FIGURE III

Music slows slightly.

- 1 Facing ctr and looking over R shldr, step on R to R (ct 1); quick step on L next to R (ct &); step on R to R (ct 2). Arms move fwd and above shldr level and make one circular movement from the wrist, both arms pointing to slightly to the L, elbows slightly bent.
- 2 Touch L toe beside R, flicking hands to L (ct 1); small low kick fwd with L, repeating hand flick (ct 2). Hands flick as if you were saying “no, no.”
- 3-4 Repeat meas 1-2 with opp ftwk and arm movement.
- 5-8 Repeat meas 1-4.
- 9 Repeat meas 1.
- 10 Touch L toe next to R, clapping hands diag fwd R at head level (ct 1); small kick with L, keeping hands in closed clap pos (ct 2).
- 11-12 Repeat meas 5-6 with opp ftwk and arm movement.
- 13-16 Repeat meas 9-12.

Repeat entire dance from the beginning. End repeating Fig I and holding in position, R arm extends toward ctr.

Duz Halay

(Turkey)

Translation: Straight Dance. Presented by Ahmet Luleci at the 2002 Stockton Folk Dance Camp.

Pronunciation: DOOZ hah-LIGH

Music: Turkish Dances No. 3, Band 12
4/4 meter

Formation: Interlocked fingers joined in V-pos and bkwd of body, elbows straight, L shldr in front of R. Dancers stand very close together with hips almost touching.

Styling: Steps are very small, flex knees on each step.

Meas	Pattern
------	---------

4 meas+drum INTRODUCTION. Begin with full orchestra.

FIGURE I

- 1 Facing ctr, step fwd on R (ct 1); slight bounce (ct 2); step fwd on L (ct 3); slight bounce (ct 4).
- 2 Step fwd on R (ct 1); slight bounce (ct 2); touch L in the front (ct 3); slight bounce (ct 4).
- 3 Step bkwd on L (ct 1); slight bounce (ct 2); step bkwd on R (ct 3); slight bounce (ct 4).
- 4 Step bkwd on L (ct 1); slight bounce (ct 2); touch R ft fwd (ct 3); slight bounce (ct 4).

FIGURE II

- 1 Facing diag L of ctr, step on R in front of L, leaning body slightly fwd (ct 1); keeping position, lift L in the back (ct 2); facing ctr, step on L back to place, keeping body in position (ct 3); lift R (ct 4).
- 2 Step fwd on R, keeping body in position (ct 1); bounce (ct 2); touch L ft fwd, body starts straightening (ct 3); lift L slightly and pump it down (ct 4). (Optional slight shldr shimmy on cts 1-2.)
- 3 Step bkwd on L (ct 1); lift R knee slightly and pump it down (ct 2); step bkwd on R (ct 3); lift L knee slightly and pump it down (ct 4).
- 4 Step bkwd on L (ct 1); lift R knee slightly and pump it down (ct 2); touch R ft fwd (ct 3); bounce (ct 4).

FIGURE III

- 1 Facing ctr, step diag back on R to R (ct 1); shift wt fwd briefly onto ball of L ft (ct &); shift wt back onto R in place (ct 2); step on L across in front of R (ct 3); shift wt briefly back onto ball of R in place (ct &); shift wt fwd onto L in place (ct 4).
- 2 Repeat meas 1.
- 3 Step on R in place (ct 1); lift L slightly and pump it down (ct 2); step on L in place (ct 3); lift R slightly and pump it down (ct 4).
- 4 Repeat meas 3.

Sequence: Fig I two times; Fig II five times; Fig III four times; Fig I three times; Fig II four times.
End with Fig I once, holding on meas 3, ct 4 and closing without bounce on meas 4, ct 4.



CHERRY BLOSSOM TIME

FOLK DANCE FESTIVAL

SONOMA VETS. BLDG., SONOMA, CA.

SPONSORED BY PETALUMA/NOVATO
INTERNATIONAL FOLK DANCERS

SUNDAY

April 6, 2003

1:30 - 5:30 p.m.

\$ 5.00

707 - 546 - 8877

Cherry Blossom Festival
April 6, 2003 at Sonoma Vets Bldg.

1:30 - 5:30 p.m.

Program of Dances

- | | |
|-----------------------------|---------------------------------|
| 1. Setnja | 28. Swedish-Finn Mixer (P) |
| 2. Road to the Isles | 29. Kvar Acharay Chatzot |
| 3. Doudlebska Polka (P) | 30. Double Sixsome |
| 4. An Dro Retourne | 31. Contra |
| 5. Caballito Blanco | 32. Joc batranesc din Niculitel |
| 6. Salty Dog Rag | 33. Japanese Soft Shoe |
| 7. Olssons' Familievals (P) | 34. Arnold's Circle (P) |
| 8. Vrapcheto | 35. Tino Mori |
| 9. Numero Cinco | 36. Bohemian National Polka |
| 10. Korobushka (P) | 37. Polharrow Burn |
| 11. Horehronsky Chardas | 38. Bluebell Waltz (P) |
| 12. Corrido | 39. Savila Se Bela Loza |
| 13. Square | 40. Valassky Starodavny |
| 14. Sulam Ya'akov | 41. La Bastringue (P) |
| 15. Hambo med Vals | 42. Yedid Nefesh |
| 16. Western Trio Mixer (P) | 43. Frenchy Brown |
| 17. Godecki Cacak | 44. Elizabeth Quadrille |
| 18. Lepa Anka Kolo Vodi | 45. Tfilati |
| 19. Contra | 46. Skt. Gilgen Figurentanz (P) |
| 20. Orijent | 47. Balmoral Strathspey |
| 21. Ada's Kujawiak #1 | 48. Vrtielka |
| 22. Three's a Crowd (P) | 49. Le Maitre de Maison |
| 23. Ivanice | 50. Lights of Vienna |
| 24. Maple Leaf Rag | 51. Bal in da Straat (P) |
| 25. Square | 52. Waves |
| 26. Paraliakos | 53. Lesnoto |
| 27. Tango Mannita | 54. Blue Pacific Waltz |

*City College of San Francisco and the
Folk Dance Federation of California present:*

Blossom Festival

International Folk Dancing

A National Dance Week Event



*Sunday,
April 27, 2003
1:00 - 5:00 p.m.*

City College of San Francisco
North Gym, 2nd Floor Dance Studio

*Everyone is Welcome, Come to Watch, Come to Dance
No Cost to Attend the Event:*

Dance Performances and International Folk Dancing
featuring dances from around the world.

STATEWIDE 2003 - A VILLAGE FAIRE

This year's Statewide Festival is trying a new approach. Rather than having master teachers and a workshop atmosphere, our teachers will come from a variety of folk dance clubs throughout the State and the theme of Village Faire will be carried through all weekend. Each club will represent their "village" and is being asked to share a favorite dance with those from neighboring "villages" (as well as professional musicians) to provide entertainment and some live music for dancing.

Pasadena has a great deal to offer those who will be attending this year's Statewide Folk-dance Festival in Southern California. Old Pasadena is a twenty-block area perfect for strolling along streets filled with shops, art galleries and restaurants. There are also historic buildings from the late 1800s, parks, gardens, including the famous Huntington Library and Botanical Gardens, museums, including the well-known Norton Simon Museum and the Pacific Asia Museum. Probably most important to dancers, however, are the wide variety of excellent choices for dining over the weekend. There is truly something for every taste. Nearby restaurants run the gamut from Denny's, Ruby's Diner and Hamburger Hamlet, to Brazilian, Caribbean, French, Indian, Italian, Jamaican, Japanese, Korean, Malaysian, Mediterranean, Mexican, Middle Eastern, South American, Spanish, Thai and more. We will have lists of restaurants and maps available for attendees.

Ask your club to participate in the festive atmosphere that will be created. And, most importantly, be sure to attend! Statewide is being presented by the Folk Dance Federation of Southern California this year, in Pasadena, at the Scottish Rite Cathedral, 150 Madison Avenue. The celebrations will go on over Memorial Day weekend, from Friday evening, May 23rd, through Sunday afternoon, May 26th.

SANDY HELPERIN
STATEWIDE 2003 COMMITTEE



Sponsored by the Folk Dance Federation of California, South



Sponsored by the Folk Dance Federation of California, South

COUNCIL CLIPS

Nadine Mitchell, 1941 Danvers Way, Sacramento, CA. 95832-1226

Phone/FAX: 916-665-1588, e-mail: ggmnadine@cs.com

Deadline for May/June 2003 issue: March 5, 2003

BERKELEY FOLK DANCERS

On Saturday, April 19, BFD will host its quarterly Open Teach Night from 7:45 PM to 10:30 PM. The Open Teach will be scheduled from 8:00 PM to 9:00 PM. The rest of the evening will be an All-Request Program at our usual site, Hillside Montessori School, 1581 Leroy Avenue, Berkeley. There will be a \$5 donation requested of non-members.

BFD is looking forward to their annual Birthday Ball which will be held in May. It is sure to be fun and festive. Join us. Watch for the announcement in next month's issue.

NAOMI LIDICKER

PENINSULA FOLK DANCE COUNCIL

The Santa Clara Valley Folk Dancers are enjoying the new location at the American Legion Hall in Campbell on Tuesday and invite all to join us.

Margaret's husband, Mike, was called to active duty from the Army Reserve. Let's hope it is for a shorter time than the year's duty and that he is close.

Santa Clara Valley Folk Dancers parties are no longer at the First Christian Church. Locations will vary depending on hall availability and will be announced at other parties.

MARGARET NACORDA-KINNEY

SACRAMENTO INTERNATIONAL FOLK DANCE & ARTS COUNCIL

Contact: Vick Vickland, ecvickland@msn.com

We have been doing a lot of creative thinking about how to improve our future by having several brainstorming sessions. We have come up with several ideas, and implemented some of them already. If you have any "brainstorms" for us, send them to Vick!

One of our ideas was to increase our public performances to let people know we exist. Recently Al and Teddy Wolterbeek got together a group, costumes and all, to perform at "Hungarian Day" at a Senior Care Home. The audience was very appreciative and they even got a free dinner out of the deal.

We are working on designing new t-shirts for the Council to raise our public image.

We are all breathing a big sigh of relief after the Camellia Festival. It is a major effort which involves all our clubs, but it is always worth it in the end because it is such a fun weekend! We are gradually getting all the kinks worked out with CSUS, and our partnership with them is beneficial for both of us.

Check out our web site on the folkdance.com site. This is a big step for us in raising our public presence. Thanks to Roy Butler for doing such a good job in keeping it up to date. And speaking of Roy, he has been teaching a beginners class which is growing very nicely, although it was slow in the beginning. All of these efforts take a long time to come to fruition, but we feel good about having made some great progress this year under our President, Vick Vickland.

BARBARA MALAKOFF



Stockton Folk Dance Camp 2003

Featuring

Jussi Aronen: Estonian
Shmulik Gov-Ari: Israeli
Jerry Helt: Squares
Larry Lynch: Irish
Kamrin MacKnight:
Scottish Ladies Step Dancing

Lee Otterholt: Balkan
Richard Powers: Vintage
Suzanne Rocca-Butler:
Non-Partner Dances
Tineke van Geel: Armenian
Live Music: Chubritza

July 21-27 & July 28-August 3

Join us for our 56th year at the beautiful
University of the Pacific Campus in Stockton, California

www.folkdance.com/stockton

Scholarships: There are many scholarships available. For details, write Folk Dance Camp Scholarships
36676 Viola Meadows Ct, Shingletown, CA 96088 or email cjwright@shasta.com. Deadline for applications: June 1, 2003.

Name (to appear on badge): _____

Address:

Number Street City State/Province Country Postal Code

Telephone Number: () FAX Number: () Email Address: _____

Sex _____ Age, if under 18 _____ Roommate Preference (if any) _____ Smoker _____ Nonsmoker _____
Early Bird _____ Night Owl _____

Are you applying for a camp scholarship? _____

I will attend folk dance camp (circle one):

1st Week 2nd Week Both Weeks Year in Camp _____

A. _____ \$590 Tuition, room and all meals

B. _____ \$505 Tuition, room and partial meals (Wed/Sat evening
banquets only)

C. _____ \$330 Commuter camper (tuition only)

_____ Single Room \$35 additional per week

Enclosed is my deposit of \$ _____ (\$50 per person minimum
per week due now, with an additional \$125 per week due by May 15).

Make checks payable to Folk Dance Camp

You may use your Credit Card: Visa _____ or MasterCard _____?

Card Number: _____

Expiration date: _____

Please CLEARLY PRINT Name as it Appears on the Card: _____

Signature: _____

*No Refunds after May 15, 2003 unless your position is filled by a person
on the waiting list*

Return to: Folk Dance Camp, Jan Wright 530-474-3231 Phone
36676 Viola Meadows Court 530-474-4501 FAX
Shingletown, CA 96088 cjwright@shasta.com

FOLK DANCE FEDERATION
OF CALIFORNIA, INC.,
P. O. Box 789
Kenwood, CA 95452

ADDRESS SERVICE REQUESTED



PRSRT STD
U. S. Postage
Paid
Sacramento CA
Permit #2352

CRAIG BLACKSTONE
207 MONTEREY RD APT 1
PACIFICA, CA 94044-1373

