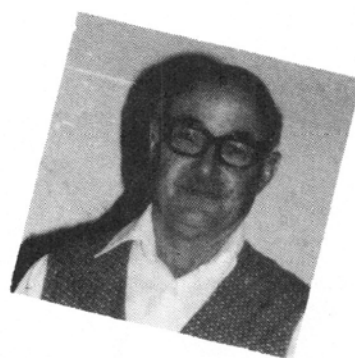


NOVEMBER 1990 • \$1.50

Let's Dance

THE MAGAZINE OF INTERNATIONAL FOLK DANCING



TREASURER'S BALL



Official Publication of the Folk Dance Federation of California, Inc.

EDITOR.....Jeanne Bertolina
CO-EDITOR AND
BUSINESS MGR....Genevieve Pereira

NOVEMBER CONTRIBUTORS:

Grace Nicholes	Virginia Wilder
Page Masson	Vera Musser
Jean Williams	Barbara Lynch
Philomena Pavelka	Judy Faoro
Stan Cummings	Ed Kremers
Elsa Bacher	Vi Dexheimer
Suzanne Rocca-Butler	Ruth Ruling
Barbara Bockholt	

FEDERATION OFFICERS - NORTH

PRESIDENT.....Lupie Barton
VICE PRESIDENT.....Frances Ajoian
TREASURER.....Page Masson
REC. SECRETARY.....Erika Hersant
PUBLICATIONS.....Ellie Wiener
MEMBERSHIP.....Melvin Mann
PUB. RELATIONS.....Michael Norris
HISTORIAN.....Grace Nicholes

FEDERATION OFFICERS - SOUTH

PRESIDENT.....Beverly Barr
VICE PRESIDENT.....Alice Stirling
TREASURER.....Bill Campbell
REC. SECRETARY.....Jill Michtom
COR. SECRETARY.....Eunice Udelf
MEMBERSHIP.....Marcia Lechtik
PUBLICITY.....Donna Hurst
HISTORIAN.....Cheryl Cates

TABLE OF CONTENTS

MENDOCINO CAMP.....	3
TREASURER'S BALL.....	4
TEXTILE CONSERVATION AT HOME.....	6
CLASSIFIED ADS.....	9
FOLK DANCE NEWS.....	10
DANCE DESCRIPTIONS:	
ČETVORNO HORO (Bulgaria).....	11
BRZAK (Serbia).....	13
INTERNATIONAL CUISINE.....	15
CALENDAR OF EVENTS.....	16
EVENTS SOUTH.....	17
COUNCIL CLIPS.....	18
STATEMENT OF OWNERSHIP.....	19

ON OUR COVER:

Page and Charles Masson



SUBMISSION DEADLINE
FOR DECEMBER ISSUE:
Wednesday, October 31

SUBMISSION DEADLINE
FOR JANUARY ISSUE:
Wednesday, November 28



SUBSCRIPTION RATE:
\$15 per year
\$20 foreign & Canada

BUSINESS OFFICE:
Wednesdays, 9:00-5:00
415-581-6000

Let's Dance (ISSN #0024-1253) is published monthly by the Folk Dance Federation of California, Inc., with the exception of the May/June and July/August issues, which are released each two-month period. Second-class postage paid at Hayward and additional mailing offices.

POSTMASTER: Send address changes to Folk Dance Federation of California, Inc., 1020 B Street, Hayward, CA 94541.

MENDOCINO FOLKLORE CAMP
A WONDERFUL FOLK DANCE EXPERIENCE

Mendocino Folklore Camp is held in Camp One of the Mendocino Woodlands Camp. It is located about 8 miles inland from the village of Mendocino, California in a beautiful setting on the wooded slopes of Little North Fork Big River adjacent to its confluence with Big River. The facilities were constructed in the late 1930's and remain much as they were then with improvements in electric, telephone, and plumbing systems. Cabins with fireplaces (wood provided if desired) and balconies house 2 to 4 people. There are three shower/restroom buildings with hot water and electricity. In the center of camp is a kitchen/dining room/social hall complex. Nearby is a dance hall with a wooden floor.

There are 4 dance classes each morning. Teachers may have journeyed from their own distant homelands or be highly qualified dance specialists from this country. Afternoons are free for hiking, swimming and sunbathing at the river, napping, or special interest activities such as singing or crafts - coin necklaces are made each year. Evening activities begin with a happy hour and theme party. The party themes come from each of the various ethnic groups represented by the dance instructors and may take many forms. Typically, it could be a national festival or a wedding. It could also be total fantasy - a jungle safari or a trip on the Orient Express.

Nearly all campers get into the mood of the party theme and come in costumes which may be authentic or a total spoof put together from the contents of the camp's costume barrels. Volunteer committees, chaired by an instructor, plan activities and decorate for each theme. A few yards of cloth and painted paper magically transform the social hall into a Turkish taverna or decorated cabins become a Catalonian village around which the planned events occur. Each day concludes with a review of the camp dances and dancing continues as long as people wish. Late night jam sessions by the camp musicians are common in the social hall.

Live music is played for a major part of the dancing. The musicians are extremely versatile and switch from one musical style to another with ease. They frequently play for class as well as parties. Their ability to learn new material from recordings is amazing. They add greatly to the spirit of the camp and enthusiasm of the campers.

An auction of donated items is held one evening. The items may be dance related, art objects, a service (massage is popular), or anything else that will bring bids to help support the work-scholarship program. Contact the camp if you are interested in a work-scholarship. Another evening event is a talent show where nearly anything goes - skits, dances, and musical performances.

Food is an outstanding feature of the camp and the menus are derived from the ethnic group represented by that day's party theme. It is plentiful, varied, and delicious. Snacks are provided in mid-morning and during the evening. Vegetarian dishes are available for those requesting them at registration.

Flyers for the camp usually appear at Kolo Festival (Thanksgiving) or shortly thereafter and advertisements may be found in Let's Dance magazine. Scheduled for teaching in 1991 are Balkan, French-Canadian, American swing, and Greek dances. The current camp address is Mendocino Folklore Camp, PO Box 8501, Berkeley, CA 94707-8501.

Close fellowship between campers and between campers and teachers adds to the special feeling of the camp. This camp is a truly wonderful and unique folk dance treat.

Stan Cummings
Judy Faoro



TREASURER'S BALL
VETERANS MEMORIAL BUILDING
SONOMA, CA

SUNDAY, DECEMBER 2, 1990

DANCE PROGRAM



1. SĚTNJA
2. EL GAUCHO TANGO
3. SANKT GILGEN FIGURENTANZ (P)
4. DOUBLE SIXSOME
5. HOFBRÄUHAUS LAENDLER
6. SQUARE

7. BELASIČKO
8. LEVI JACKSON RAG
9. OKLAHOMA MIXER FOR 3 (P)
10. CIULEANDRA
11. SANTA RITA
12. SQUARE

13. SVEKRVINO ORO
14. HAMBO
15. TANGO POQUITO (P)
16. TRIP TO BAVARIA
17. ŠIRTO
18. CONTRA

19. ORIJENT
20. ADA'S KUJAWIAK #1
21. BLACK MOUNTAIN REEL
22. TZADIK KATAMAR
23. CORRIDO
24. SQUARE

25. PLATANIOTIKO NERO
26. LA ENCANTADA
27. SWEDISH-FINN MIXER (P)



28. DUNDEE WHALER
29. JAPANESE SOFT SHOE
30. CONTRA

31. BELA RADA
32. ALEXANDROVSKA
33. LET'S HAVE A CEILIDH
34. KARAMFIL
35. MAPLE LEAF RAG
36. LA CACHUCHA

37. DIVČIBARSKO KOLO
38. ZILLERTALER LAENDLER
39. LA BASTRINGUE (P)
40. ELIZABETH QUADRILLE
41. DOBBEL REINLENDER
42. LOUISIANA SATURDAY NIGHT

43. VLAŠKO
44. SOMEWHERE MY LOVE
45. MAIRI'S WEDDING
46. VRAPCHETO
47. VRTIELKA
48. GRAND SQUARE

49. LESNOTO
50. DREISTEYRER
51. BAL IN DA STRAAT (P)
52. POSTIES JIG
53. KNODELDRÄHNER
54. BLUE PACIFIC WALTZ

Folk Dance Scene

For info on the many aspects
of various ethnic communities
in the world, for up-to-date info
on "folk" happenings in the U.S.
and abroad, for interviews with
notable folk dance personalities, and
much more, you should be reading
the FOLK DANCE SCENE



SUBSCRIBE NOW! Only \$10 per year (for ten issues). Send check and
current address to: FOLK DANCE SCENE, 22210 Miston Dr., Woodland
Hills, CA 91364.





TREASURER'S BALL

A MESSAGE FROM THE TREASURER

I am especially hopeful that all clubs will support the Treasurer's Ball this year. The Federation expenses are rising faster than our income. Projects are not making enough money to keep up with the costs of operating the Federation. What happens to the organization has a direct effect on you and your clubs as you well know.

The Treasurer's Ball is one money making project the Federation sponsors; this is why a special request is being sent to you and your clubs to really support us this year. You can do this by attending the dance and by helping sell raffle tickets that will be sent out shortly. Your cooperation is most appreciated by all of us on the Federation Board.

There will be the usual great dance program with lots of door and raffle prizes, costume sale by Genevieve Pereira and a chance to visit with all your fellow folk dancers.

This year we will be adding to our program a room of Scandinavian dancing. Dean Linscott is graciously donating his time to M.C. this affair. I know all you Scandinavian dancers will be delighted to read this; so I'm sure to see lots of new faces at this gala event.

A Council Presidents meeting will be at 11 a.m. followed by the Assembly Meeting at 11:45. Lunch follows after the meetings.

To all folk dancers near and far-- come join your friends for a great afternoon. See you all on

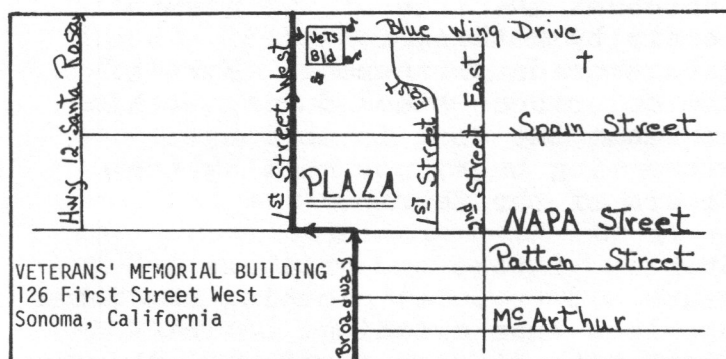
DECEMBER 2, 1990

COME ONE, COME ALL!
TO THE

TREASURER'S BALL
VETERANS MEMORIAL BUILDING
SONOMA, CA

SUNDAY, DECEMBER 2, 1990

1:30 to 5:30 P.M.



TEXTILE CONSERVATION (Cont.)

you can. Often old fabrics change color under the wet heat, but regain original colors, or near it, when they cool and dry.

These are the general rules for hand washing antique clothing:

Do a test strip first on all fabrics in the garment.

Use Orvus soap (if possible) or powdered Woolite. Liquid Woolite has a different formula than the powdered. Orvus can be purchased at livestock supply houses that carry sheep supplies. It is expensive but lasts a long time.

Use Snowy or any other sodium perborate color brightener, if needed. Do not use a chlorine bleach; hard on fibers.

Most wet fabrics weigh more than dry and tend to rip easily, so cradle the costume in a towel when you pick it up. Or support the outfit at several points.

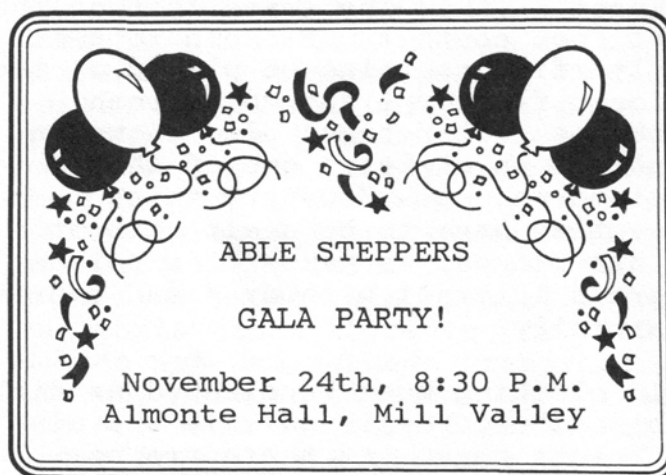
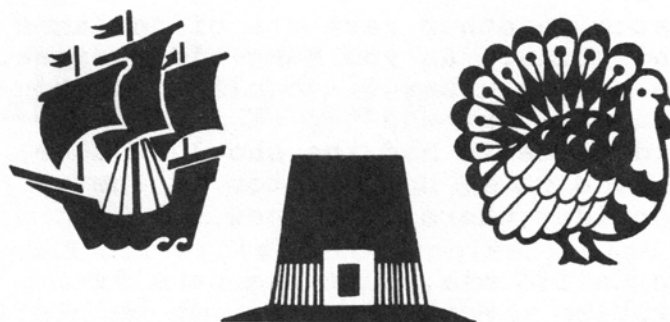
Soaking overnight is okay unless the colors are bleeding badly.

Most dirt is yellow brown in water. Blue dye often looks reddish or purple when it runs.

You need to rinse the garment three to five times. Distilled water is best for rinsing, but very expensive. Soap is out when bubbles in rinse water pop quickly and look clear, not milky.

Never wring, but pat dry in towel before placing on a fiberglass screen or another towel. If fabric is very strong, you can hang it, supported by plastic clothespins at several points. A towel on the clothes line, prevents those fold-over lines. Do not dry in direct sunlight unless the garment is cotton, strong and you are trying to bleach it.

The foregoing are general rules for conservation of antique and vintage clothing. If you love the old costume, you need lots of courage when you begin cleaning at home and the ability not to brood overlong about your failures. There are several books available now about clothing conservation.



S & S The TRAVEL Place

S & S FESTIVAL TOURS

With SAM & SARAH STULBERG

NEW IN 1990:

ALASKA F.D./CULTURAL CRUISE
June 2 - 16

BULGARIA & KOPRIVSHITSA Festival
July 26 - Aug. 12

Write or call for update:

2001 MERRIMAC DRIVE,
STAFFORD, VIRGINIA 22554

ph. (703) 527-8998

CLASSIFIED ADS

FOR SALE: CALIFONE SOUND SYSTEMS - Phil Maron, 4820-A Lawton Avenue, Oakland, CA 94609, 415-654-1124. Folk dance records

COME DANCE - with Millie von Konsky. Sgles, cpls welcome. Day classes in Folk, Line, Square, Round. Mon., 1 P.M., 300 Estudillo, San Leandro. Tues., 1:30 P.M., 22325 N. 3rd, Hayward.

JOSETTA DANCERS - Josetta Dance Studio, 3280 El Camino, Santa Clara. Folk Dancing, Wed, 7:30 P.M.; Latin/Ballroom/Disco Mon. and Fri, 7:30 P.M.; Studio Party, Tues, 8:30 P.M. Josetta.

WESTWOOD CO-OP FOLK DANCERS - meet Thursday nights, 8:00 to 10:45 P.M., Emerson Jr. High School, Selby near Santa Monica Blvd. W.L.A.

FOLK DANCE RECORD SHOP

ED KREMERS' FOLK SHOWPLACE - Dance, school, and foreign records. Dance books and supplies. Public address systems and cassettes of "unavailable" music. Teacher, Caller, Party Leader. 155 Turk Street, San Francisco, CA 94102, Downstairs, Afternoons, 415-775-3444.

Associate Membership Application ()
Let's Dance Subscription ()

Name: _____ Date: _____

Address: _____

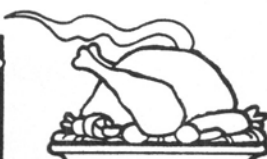
_____ Zip: _____

Telephone: () _____

Associate Membership Dues.....\$20
(Let's Dance-\$15 + \$5 Dues = \$20)

Let's Dance only.....\$15
(Add \$5 postage foreign)

Folk Dance Federation of California, Inc.
1020 "B" Street, Suite 2
Hayward, CA 94541
415-581-6000



FOLK·DANCE·NEWS

DANCE RECOGNITION AWARDS - The Oakland Office of Parks and Recreation and the Dance and Music Advisory Committee presented the First Annual Dance Recognition Awards on Monday, October 1st, at the Lakeside Park Garden Center. Honored were Ruth Beckford, Millie von Konsky, and Louise Jorgensen.

Ruth Beckford, former member of the Katherine Dunham Dance Company, brought her expertise and knowledge to the Oakland Recreation Department in the 1940s. During her years with the Department, she developed the very vital Modern Dance Program. By bringing dance classes, workshops, and performance experiences to the children of Oakland, she succeeded in training a generation of dancers who are prominent in dance communities throughout the nation.

Millie von Konsky, beginning in 1947, lead numerous children and adults in recreational folk dance for Oakland Parks and Recreation. Skilled in many different folk dance forms, she is known for her versatility and superb dance technique. She participated as a leader of the Special Folk Dance Week at Feather River Camp, and designed and produced the stunning Annual Children's Folk Dance Festival.

Louise Jorgensen was raised and educated in Oakland and began her career with the Department as a Recreation Leader. Following a period as a theatrical dancer on the East Coast, she returned to Oakland to become the Director of the Annual Oakland Children's Holiday Pageant, for over 60 years.

MARIN'S WORLD TOUR - Marin Center's 1990-91 "World Tour" season features outstanding folk dance and music companies from around the world. The National

Ballet Folklorico of Chile will perform on November 2; "Pirin," the Bulgarian National Folk Ensemble, will perform on February 24, and the José Greco Spanish Dance Company will perform on March 22. All performances are in the beautiful 840-seat Angelico Hall at Dominican College in San Rafael. For single and group ticket sales information, call the Marin Center Box Office at 415-472-3500. There is a discount for groups of 15 or more.

GRAND BALL - The Presidents International Grand Ball will be held on Saturday, December 29, at the Veterans Building in Sonoma. There will be ballroom music from 7:30 to 8:00, a Grand March at 8:30 followed by international folk dancing, a Chamarita at 9:45, and a Polonaise at 11:00. The dancing, festivities, and refreshment will continue till midnight. Only a \$10 donation will get you the best evening of dancing you've had in a long time. Wear a costume, or come semi-formal. For more information, call: Elmer & Millie Riba, 209-296-7688, Max Horn, 415-228-8598; or Frank & Elsa Bacher; 707-546-8877.

IN MEMORIAM - It is sad to report that June Schaal, a folk dance teacher in both the US and Europe, well-known to all folk dancers, passed away on Sunday, September 30. She will be missed by all.



Četvorno Horo (Bulgaria)

Yves Moreau learned Četvorno Horo (chet-VOHR-noh hoh-ROH) in the village of Bistrica, Sofia district, in the summer of 1966. This line dance is done only in the Shope area of Bulgaria. Mr. Moreau has taught the dance throughout the United States. These notes are based on his presentation in Chicago in 1969.

RECORD: Folk Dancer MH 45x3058A "Četvorno Shopsko Horo"; 7/8 meter
XOPO ZLP 4; Slavjani LP 1000 or LP-B-4000 "Folklore Dances of Bulgaria";
any other Četvorno Horo melody. All these records should be slowed down.

RHYTHM: 7/8 meter: 1-2-3, 1-2, 1-2 counted as 1,2,3 (S,Q,Q).

FORMATION: It is preferred that M and W be in separate lines to emphasize the respective styling. The dance may also be done in short mixed lines. Belt hold is used with L arm over neighbor's R arm.

STEPS: Bicycle R: Step on R ft (ct 1); hop on R while raising L knee fwd and up (ct 2); light stamp with L, no wt unless specified (ct 3). This L lower leg action should be a smooth, continuous movement with the leg kept in front of the body. Bicycle L begins with a step on L ft (ct 1).

Twizzle R: Step on R slightly to R while raising L heel and twisting it sharply to the R in a clearly defined movement (ct 1); step on L to L (ct 2); step on R behind L (ct 3). Twizzle L begins with a step on the L (ct 1).

STYLING: Shope dances are somewhat "heavy" in character, but the torso is erect most of the time. All movements are sharp and firm. Knee action is high, especially for the M. Shouts often accompany the footwork.

MUSIC	7/8 meter	PATTERN
-------	-----------	---------

Measures

16 meas INTRODUCTION No action. Beg with vocal.

I. BASIC

1 With wt on L, facing slightly R of ctr, step fwd on R in LOD (CCW) (ct 1); hop on R (ct 2); step fwd on L in LOD (ct 3).

2-3 Repeat meas 1 twice.

4 Turn to face ctr and Bicycle R.

5-8 Repeat meas 1-4 with opp ftwk and direction.

II. TWIZZLE AND SCISSORS

1-3 Repeat Fig I, meas 1-3 (Basic).

4 Face ctr and Twizzle R (cts 1,2,3).

- 5 Bicycle L (cts 1,2,3).
- 6 Step on R beside L (ct 1); hop on R (ct 2); step on L in place while extending R ft fwd close to floor preparing for the next step (ct 3).
- 7 Scissors: Step on R beside L while extending L ft fwd close to floor (ct 1); step on L beside R while extending R ft fwd close to floor (ct 2); step on R beside L while extending L ft fwd close to floor (ct 3).
- 8 Bicycle L.

III. LEFT TWIZZLE AND PAS DE BASQUE

- 1-4 Repeat Fig II, meas 1-4 (Basic plus Twizzle R).
- 5 Face slightly L of ctr and moving in RLOD (CW), step fwd on L (ct 1); hop on L (ct 2); step fwd on R (ct 3).
- 6 Twizzle L.
- 7 Pas de basque: Facing ctr, step on R to R (ct 1); step on ball of L in front of R (ct 2); step on R in place (ct 3).
- 8 Bicycle L.

IV. TWIZZLE AND BICYCLES

- 1-4 Repeat Fig II, meas 1-4 (Basic plus Twizzle R).
- 5 Keeping knees close together throughout, leap onto L turning body and knees to face RLOD (ct 1); leap onto R turning body and knee to face LOD (ct 2); step on L turning body to face RLOD (ct 3). These actions should be done very sharply with especially high leaps by the M.
- 6 Bicycle R, but take wt on L on ct 3.
- 7-8 Bicycle R (meas 7). Bicycle L (meas 8).

V. HEEL TOUCHES

- 1-4 Repeat Fig II, meas 1-4 (Basic plus Twizzle R).
- 5 Facing ctr, step fwd on L (ct 1); hop on L, bringing R leg up, knee bent and turned to R (ct 2); touch R heel to R side, leg straight (ct 3).
- 6 Touch R heel to floor but more twd ctr (ct 1); leap fwd onto R bringing L leg up, knee bent and turned to L (ct 2); touch L heel to L, leg straight (ct 3).
- 7 Touch L heel to floor but more twd ctr (ct 1); leap fwd onto L ft bringing R ft up behind L calf (ct 2); hold (ct 3).
- 8 Leap bkwd onto R ft (ct 1); with ft together, bounce twice (cts 2,3).

DANCE SEQUENCE: Dance each Fig twice and then repeat from beginning as many times as music allows.

Brzak (Serbia)

Brzak (BER-zak), meaning "rapids" (of a river), comes from the area around the Studenica monastery. It was presented by Slobodan Slovič at the 1988 Kolo Festival and at the 1990 University of the Pacific Folk Dance Camp, among other places.

CASSETTE: Serbian Folk Dances SS-3 (1988) Side B/1. 2/4 meter

FORMATION: Mixed lines with hands joined in "V" pos. Face R of ctr, wt on L ft.
Leader at R end.

STEPS and Lift*, pas de basque*.

STYLING:

Steps are light and flowing, danced in a relaxed manner.

* Described in Steps & Styling, published by the Folk Dance Federation of Calif., Inc.

MUSIC	2/4 meter	PATTERN
-------	-----------	---------

Measures

INTRODUCTION None.

I. MOVING IN LOD

- A 1 Moving in LOD (CCW), step on R (ct 1); lift on R ft, bringing L leg fwd with knee bent (ct 2).
- 2 Repeat meas 1 with opp ftwk.
- 3 Hop on L ft, raising R knee (ct 1); step R,L in LOD (cts &,2).
- 4 Beg R, dance 3 small steps in LOD (cts 1,&,2).
- 5-8 Still moving in LOD, repeat meas 1-4 with opp ftwk. On last step on L (meas 8, ct 2), turn to face ctr while raising R ft up in back.

II. MOVING SIDEWARD IN LOD AND RLOD

- All steps are small and on the full ft.
- B 1 Facing ctr, step sdwd R on R ft (ct 1); step on L beside R (ct &); repeat exactly (cts 2,&).
- 2-3 Repeat meas 1 twice.
- 4 Step sdwd R on R ft (ct 1); step on L beside R (ct &); Step sdwd R on R ft, bending R knee and raising L ft up in back (ct 2).
- 5-8 Repeat meas 1-4 with opp ftwk and direction.

III. FACING CENTER

- C 1 Facing ctr, hop on L, raising R knee (ct 1); step on R across in front of L, turning slightly twd RLOD (CW) (ct &); step back onto L to face ctr (ct 2).
- 2 Low leap sdwd R onto R ft (ct 1); low leap sdwd L onto L (ct 2).
- 3 Beg R, dance a pas de basque to R side (cts 1,&,2).
- 4 Repeat meas 3 to L side with opp ftwk.
- 5 Hop in place on L, raising R knee (ct 1); step fwd on R (ct &); step on L beside R (ct 2).
- 6 Jump onto both ft, landing with R ft slightly fwd of L (ct 1); leap onto R ft (ct 2).
- 7 Hop on R (ct 1); step on L in front of R (ct &); step back onto R (ct 2).
- 8 Hop on R, moving back a little and swinging L ft bkwd (ct 1); step bkwd onto L ft (ct 2).

DANCE SEQUENCE: Dance pattern as written until music ends.

© Folk Dance Federation of California, Inc. September 1990



LET'S DANCE MAGAZINE

Folk Dance Federation of California, Inc.
1020 "B" Street, Suite 2
Hayward, CA 94541
415-581-6000 (office hours - Wed.)

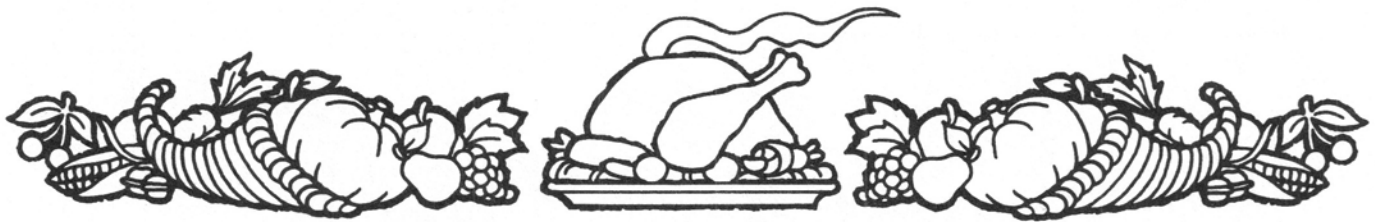
ADVERTISING RATES

MONTHLY: (per year = x 10 less 10% for cash)

Full page.....	7 1/2" by 10".....	\$80
Half page.....	7 1/2" by 5".....	\$45
Quarter Page...	3 3/4" by 5".....	\$25
Eighth Page....	3 3/4" by 2 1/2"....	\$15
Spot ad.....	1 7/8" by 2 1/2"....	\$10

CLASSIFIED:

\$2 per line per time, \$4 minimum



Events South

- Nov. 18 Festival hosted by West Valley Folk Dancers,
Van Nuys - Sherman Oaks Park, Van Nuys, 1-5 pm.
Council meeting, 10:30 am.
- Mar. 16, 1991 Lech Lamidbar Festival hosted by China Lake
Desert Dancers, 1:30-4:00 pm and 8:00-11:30 pm.
Kerr Mc Gee Center, California St. near China
Lake Blvd., Ridgecrest.
- June 28-July 5 Idyllwild Folk Dance Workshop,
Weekend, June 28-30.

39th ANNUAL KOLO FESTIVAL

November 22-24, 1990

Spartan Gym, San Jose State University



Teachers:

Jaap Leegwater - Dances of Bulgaria

Barry Glass - Dances of Croatia

Petur Iliev - Dances of Bulgaria

Dennis Boxell - Dances of Greece

Beginning and experienced dancers' classes offered.

Parties with live music on Friday and Saturday nights.

Dance concert Saturday evening.

**For more information or to get on our mailing list please call
Sharen Skorup (415) 481-8481 or send a legal size SASE to
1186 Via Lucas, San Lorenzo, CA 94580.**

COUNCIL·CLIPS

GREATER EAST BAY FOLK DANCE COUNCIL

The East Bay Women's Dance Circle will have their party Thursday, November 15, 9:30 to 11:30 A.M. They dance under the direction of Grace Nicholes, assisted by Gwen Heisler and Jerry Washburn Jr., at the Allendale Recreation Center, 3711 Suter Street, Oakland.

The Berkeley Senior Citizen Dancers will have their party on Sunday, November 18, from 1 to 4 P.M., at the Berkeley Senior Center, Old Grove Street and Hearst Avenue, Berkeley. Stan Valentine will call squares, and Lloyd Day will MC.

The Concord Folk Dancers will have their party Sunday, November 4, 1:00 to 4:00 P.M., with refreshments at 2:30, at the Concord Senior Center, 2727 Parkside Circle, Baldwin Park, Concord. Stan Valentine will call squares, and Jean Williams will MC.

SAN FRANCISCO COUNCIL

WHAT'S HAPPENING AT CHANGS - Thanksgiving Day will soon be here. Changs has a very good reason to be thankful - the club was able to return to its new-found "home" after the earthquake had caused a five-month period of inactivity. Everything is back to normal, thanks to Changs' loyal officers and members. Ruth Ruling will be teaching on November 2 and 9. The monthly party will be held on November 16. Changs will be closed on November 23 and 30. Come join us at our meeting place at 1329 7th Avenue, San Francisco.

FUN CLUB - The Harvest Time Party will be held on Saturday, November 3, 7:30 P.M., at Noriega and 34th Avenue, donation: \$3. Classes taught by Bob Hardenbrook meet every Thursday evening, 7:30 to 9:45 at the Jackson Playground, Mariposa and Arkansas Streets, near 18

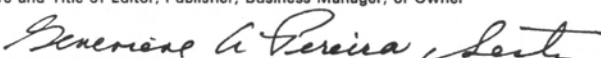
18th Street. The San Francisco Council's FALL FESTIVAL will be held on Sunday, November 4, 1:30 to 5:30 P.M., at Noriega and 34th Avenue, donation: \$3. Public transportation is available on the #71 bus direct, or the #29 bus to Noriega and 36th Avenue.

SAN FRANCISCO WOMEN'S DANCE CIRCLE - Meets at 50 Scott Street on Wednesdays, 9:45 to 11:45 A.M., to dance international folk dances under the direction of Grace Nicholes. All women, who may or may not know folk dances, are invited to join this friendly group. On Wednesday, November 7, the San Francisco Circle will host a party for the East Bay Women's Dance Circle. The program will consist of "Oldies but Goodies" - dances that have been done for a long time, but are not forgotten.

PENINSULA COUNCIL - Congratulations to Bobbi Ashley, who was the 1990 recipient of the Council's Stockton Scholarship. Happy dancing, Bobbi!

Seif Ebertz is our new President, and he has an enthusiastic staff of old and new officers to work with. Al Lisin, Dance Party Chairman, announced plans for two upcoming parties: the November 3rd Little Nite Music Party, with Marcel Vinokur as MC, to be held at the Community Church in San Carlos; and the New Year's Eve Party to be held at the Veterans Memorial Building in Redwood City.

The November Peninsula Party Schedule is as follows: 3rd, Little Nite Music, San Carlos; 10th, Santa Clara Valley Dancers, San Jose; 17th, Palo Alto Folk Dancers, Lucy Stern Center; 17th, Marcel Vinokur Dancers, Menlo Park Recreation Center; and 24th Docey Does, San Carlos, Arroyo & Elm. The Kolo Festival will be held at San Jose State University on November 23 and 24.

U.S. Postal Service STATEMENT OF OWNERSHIP, MANAGEMENT AND CIRCULATION <small>Required by 39 U.S.C. 3685</small>		
1A. Title of Publication LET'S DANCE	1B. PUBLICATION NO. 0 0 2 4 1 2 5 3 3A. No. of Issues Published Annually 10	2. Date of Filing 9-26-90 3B. Annual Subscription Price \$15.00 \$20.00 foreign
3. Frequency of Issue Monthly except bi-mo May/June & July/August		
4. Complete Mailing Address of Known Office of Publication (Street, City, County, State and ZIP+4 Code) (Not printers) 1020 "B" Street, Ste 2, Hayward, CA 94541		
5. Complete Mailing Address of the Headquarters of General Business Offices of the Publisher (Not printer) FOLK DANCE FEDERATION OF CALIFORNIA, Inc. 1020 "B" Street, Ste 2, Hayward, CA 94541		
6. Full Names and Complete Mailing Address of Publisher, Editor, and Managing Editor (This item MUST NOT be blank)		
Publisher (Name and Complete Mailing Address) FOLK DANCE FEDERATION OF CALIFORNIA, INC. 1020 "B" Street, Ste 2, Hayward, CA 94541		
Editor (Name and Complete Mailing Address) Jeanne Bertolina 1186 Highland Blvd., Hayward, CA 94542 Genevieve Pereira 1811 Cornell Drive, Alameda, CA 94501		
Managing Editor (Name and Complete Mailing Address) Genevieve Pereira 1811 Cornell Drive, Alameda, CA 94501		
7. Owner (If owned by a corporation, its name and address must be stated and also immediately thereunder the names and addresses of stockholders owning or holding 1 percent or more of total amount of stock. If not owned by a corporation, the names and addresses of the individual owners must be given. If owned by a partnership or other unincorporated firm, its name and address, as well as that of each individual must be given. If the publication is published by a nonprofit organization, its name and address must be stated.) (Item must be completed.)		
Full Name	Complete Mailing Address	
Folk Dance Federation of California, Inc.	1020 "B" St., Ste 2, Hayward, CA 94541	
8. Known Bondholders, Mortgagees, and Other Security Holders Owning or Holding 1 Percent or More of Total Amount of Bonds, Mortgages or Other Securities (If there are none, so state)		
Full Name	Complete Mailing Address	
9. For Completion by Nonprofit Organizations Authorized To Mail at Special Rates (DMM Section 423.12 only) The purpose, function, and nonprofit status of this organization and the exempt status for Federal income tax purposes (Check one)		
<div style="display: flex; justify-content: space-between;"> <div>(1) <input type="checkbox"/> Has Not Changed During Preceding 12 Months</div> <div>(2) <input type="checkbox"/> Has Changed During Preceding 12 Months</div> <div>(If changed, publisher must submit explanation of change with this statement.)</div> </div>		
10. Extent and Nature of Circulation (See instructions on reverse side)	Average No. Copies Each Issue During Preceding 12 Months	Actual No. Copies of Single Issue Published Nearest to Filing Date
A. Total No. Copies (Net Press Run)	800	800
B. Paid and/or Requested Circulation		
1. Sales through dealers and carriers, street vendors and counter sales	0	0
2. Mail Subscription (Paid and/or requested)	697	670
C. Total Paid and/or Requested Circulation (Sum of 10B1 and 10B2)	697	670
D. Free Distribution by Mail, Carrier or Other Means Samples, Complimentary, and Other Free Copies	28	28
E. Total Distribution (Sum of C and D)	725	698
F. Copies Not Distributed		
1. Office use, left over, unaccounted, spoiled after printing	75	102
2. Return from News Agents		
G. TOTAL (Sum of E, F1 and 2—should equal net press run shown in A)	800	800
11. I certify that the statements made by me above are correct and complete	Signature and Title of Editor, Publisher, Business Manager, or Owner 	



FOLK DANCE FEDERATION OF CALIFORNIA, INC.

1020 B STREET, SUITE 2, HAYWARD, CALIF 94541

SECOND CLASS
U.S. POSTAGE
PAID
HAYWARD, CA

1991-03 1 A
ED HUGHOT
912 RICH AVE #2
MTN VIEW, CA 94040



DANCE ON THE WATER 8th Annual Folk Dance Cruises

7 DAY GREEK ISLANDS and TURKEY
FOLK DANCE CRUISE
ABOARD SUNLINE'S STELLA SOLARIS
DANCING LED BY
RICHARD DUREE
JULY 8-15, 1991
CRUISE COST FROM \$1425.00*

14 DAY ALASKA FOLK DANCE CRUISE
ON THE SS UNIVERSE
THE FLOATING UNIVERSITY
DANCING LED BY
AL GLADSTONE
JULY 28 TO AUG 11, 1991
CRUISE COST FROM \$2095.00

OUR MOST REQUESTED DESTINATION
SAIL ON A FIVE STAR SHIP FOR THE
CONSUMMATE MEDITERRANEAN CRUISE
EXPERIENCE...VISIT HISTORIC SITES
WHOSE VERY NAMES EVOKE
EXCITEMENT, EMOTION AND DESIRE

WALK ON AN ISLAND SO SACRED THAT
ANCIENT GREEKS DECLARED NO MORTAL
COULD BE BORN OR DIE THERE

MARVEL AT ANCIENT STRUCTURES WHOSE
CONSTRUCTION DEFIES THE IMAGINATION
EVEN TODAY

DANCE YOUR WAY THRU HISTORY,
WITH LOCAL FOLK-DANCERS
IN THE GREEK ISLANDS AND TURKEY

*NOTE: EARLY SIGN-UP DISCOUNTS
STARTING AT \$1425 EXPIRE FEB. 28, 1991.
THEREAFTER FARES WILL INCREASE.

REPEATING THIS POPULAR SELL-OUT
FOLK DANCE CRUISE FOR THE
SEVENTH CONSECUTIVE YEAR

BASK IN THE BEAUTY AND SPLENDOR OF
ALASKA'S INSIDE PASSAGE..
VISIT CHARMING HISTORIC TOWNS THAT CAN
ONLY BE REACHED BY SHIPS. MARVEL AT THE
MAJESTIC GLACIERS. GO ALL THE WAY NORTH
TO ANCHORAGE, DANCE WITH
FOLK DANCERS

FEED YOUR INTELLECT AS WELL AS YOUR
APPETITE ON THIS INFORMAL CULTURAL
AND INFORMATIVE CRUISE
HEAR PROFESSORS LECTURE ON ALASKA:
IT'S HISTORY, GEOLOGY, AND PEOPLE

NOTE: ALASKA SIGN-UPS BEFORE
FEB. 28, 1991 RECEIVE A FREE
3 DAY VACATION BONUS

JOIN US FOR FOLK DANCING ON BOARD SHIP AND COMRADERIE WITH
FOLK DANCERS FROM ALL OVER THE U.S. AND CANADA

NOTE: DANCING LIMITED TO BERKELEY TRAVEL SIGN UPS, SPACE IS LIMITED
LAST YEAR WE SOLD OUT EARLY

DO NOT DELAY...RESERVE NOW THROUGH BERKELEY TRAVEL COMPANY

SINGLE SHARES UPON REQUEST

FOR MORE INFORMATION MAIL COUPON TO:

MEL MANN (FOLK DANCER, TRAVEL AGENT)
BERKELEY TRAVEL COMPANY
1901 CALIFORNIA ST.
BERKELEY, CA 94703
(415)526-4033

Please send information about

- ☐ 1991 Greek Isle/Turkey Folk Dance Cruise
☐ 1991 Alaska Folk Dance Cruise
☐ Single Share information: Female ☐ Male ☐

NAME _____

ADDRESS _____

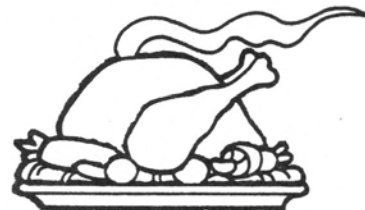
CITY _____ STATE _____

ZIP _____ PHONE _____

HAPPY
THANKSGIVING

FROM

LET'S DANCE



WELCOME TO
THE
TREASURER'S
BALL

WES TAKARA

